



**consultants**

**Civil and Structural  
Consultant Engineers**

# Company History

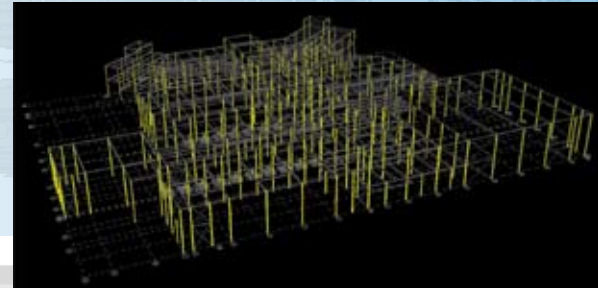
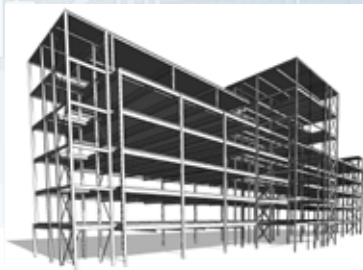
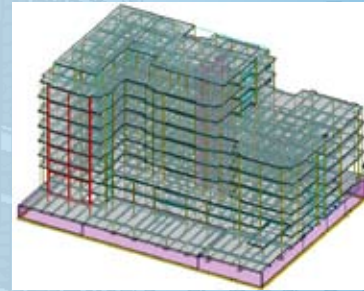
- Established in 1992 by Alan Caygill, Malcolm Harding and Peter Readman, joined by David Hodgson in 1995 all previously worked as structural engineer for the Conder Group.
- Growth by providing fast, accurate and economic designs.
- Diversified with the demand for AMP's design and engineering expertise.
- David Hodgson became Managing Director of AMP in 2006.
- Now an internationally/recognised capability to offer complete structural design, and engineering solutions for the built environment.
- Malcolm Harding continues in a consultant capacity and remains a shareholder.



# BIM (Building Information Modelling)

**AMP Consultants** utilise the most current analysis and modelling software to provide an efficient and cost effective design process. Our software packages are able to share information; reducing time by minimising the amount of information being duplicated.

**3D Modelling** not only allows us to produce drawings, details, and schedules, but also co/ordination between other trades; such as Architect's, Mechanical, and Electrical Engineers.



# Manor Park, Runcorn

Client: Gladman

- 3 No. 40m span warehouse
- 3 storey office block



amp consultants

INDUSTRIAL



# Core Values

- Versatility
- Innovation
- Reputation
- Creativity
- Speed
- Quality
- Sustainability





# Our Services

- Structural Design
- Structural modifications & refurbishment
- Foundation design
- Steel Fabrication designs and details
- Steel connection design

# Designing the Built Environment

- Health / Hospitals and Medical Centres
- Education / Schools and Colleges
- Offices / Commercial and Business Parks
- Retail / Supermarkets and Shopping Centres
- Industrial / Warehousing, Factories and Cold Stores

# York Hull Medical School

Steel superstructure designs and fabrication drawings for three-storey, 19,800 sq ft school on the University's York Campus providing state-of-the-art training and research facilities for scientists and students.

- Superstructure design and fabrication details
- Exterior terracotta clay modular blocks and insulated metal cladding, with stack/bonded blocks
- Interior stud partitioning and suspended ceilings with a lay/in grid



amp consultants

HEALTH

ace  
consultancy engineering business environment  
SCI



# MSCP, Marriotts Close, Witney

**Client:** Simons Development

The five storey 556 space car park anchors a mixed use scheme at Witney.

**AMP** Consultants role includes the design of steelwork, crash barrier-integrated handrail, masonry support, precast floor units and stairs.



**amp consultants**

**RETAIL**

# Widnes Shopping Centre

**Client:** Stadium (Widnes) Ltd

**Value:** £20M

**Location:** Widnes

Due for completion March 2010, Widnes Shopping Park formally known as the Windmill Centre. The scheme includes substantial remodelling of the existing retail park to provide additional retail units including the creation of lower ground level parking.



The logo for amp consultants, featuring a stylized 'a' made of blue squares followed by the text 'amp consultants' in a blue sans-serif font.

RETAIL

The logo for ace, featuring the word 'ace' in blue with a stylized blue arc above it. Below it, the words 'consultancy engineering business environment' are written in small blue text. To the right is the SCI logo, which consists of a stylized 'S' and 'C' in blue and grey, with 'SCI' in blue text below it.

# Nuffield Hospital, York

**Client:** Nuffield Hospitals

**Value:** £22M

Re/configuration and refurbishment of an existing building in the centre of York into a new private hospital. The building, formerly the Nestlé canteen includes 40 beds, operating theatres, physiotherapy rooms, consulting and treatment rooms, a gymnasium and a mammography unit.



**amp consultants**

**HEALTH**

# Fairlawns Medical Centre and Polyclinic, Sheffield



**Client:** Sheffield West PCT

- Working with Architects PRP
- first development of its type
- 3/storey accommodation
- 4 GP practice



amp consultants

ace  
consultancy engineering business environment

SCI

HEALTH



# Adidas Head Office & Warehouse Trafford Park

Structural steelwork design for a massive new 360,000 sq ft headquarters and warehouse complex in Trafford Park for Adidas.



**amp consultants**

**OFFICES & RETAIL**



# Phoenix House, Warrington

**Developer:** Marshall Commercial  
Property Development

**Value:** £15M

**Architect:** BMS

- 4 storey office block
- Plant room with central hipped roof area



**amp consultants**



**OFFICES**

# Trinity Green Campus

**Client:** Bradford College

**Architect:** Jefferson Sheard Architects

**Value:** £20M

**Contractor:** BAM (Formerly HBG)

Trinity Green Campus houses Bradford College's Sport Engineering and Construction Departments. The campus is also home to Bradford Disability Sports and Leisure Academy.



EDUCATION

# Jarrow School

Client: BSF STaG  
Architect: Ryder Architecture  
Contractor: Carillion  
Value: £19M



 **amp** consultants

EDUCATION

   
consultancy engineering business environment



# Calthorpe House, Birmingham



**Client:** Calthorpe Estates

**Construction Value:** £40M

**Architect:** Webb Gray & Partners

**Start on site:** October 2008

- 8 floors including car parking & landscaping zones
- Large open plan floor plates of up to 2,062 sq m (22,200 sq ft) 9,810 sq m (105,600 sq ft)
- BREEAM\* 'Excellent' rated
- Grade A office accommodation

# Stuarts House, York



**Client:** Shepherd Developments

**Architect:** Shepherd Design Group

**Contractor:** Shepherd Construction

- Three - storeys
- Comfort cooled.
- Full height entrance lobby.
- Floor Areas 37,317 Ft<sup>2</sup> 3,466 M<sup>2</sup>
- Total 37,317 Ft<sup>2</sup> 3,466 M<sup>2</sup>

amp consultants

OFFICES





# South Leicestershire College, Wigston

**Client:** South Leicestershire College

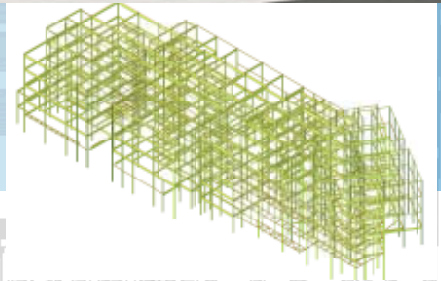
**Architect:** Metz

**Contractor:** Bowmer & Kirkland

**Start on site:** February 2009

**Value:** £40M

- 6 storeys
- 11,500m<sup>2</sup>
- 3D analysis, design and modelling adopting latest IT transfer of data



**amp consultants**

**EDUCATION**

# Bishop Auckland College



**Project:** Phase 3 at Spennymoor  
**Client:** Bishop Auckland College  
**Architect:** Howarth Litchfield Partnership  
**Value:** £17M  
**Contractor:** Surgo  
**Start on site:** February 2009



 **amp consultants**

   
consultancy engineering business environment

EDUCATION

# No. 1 City Square, Leeds

Client: Norwich Union

Architect: Aedas (formerly Abbey Hanson Rowe)

Developer: Norwich Union

Contractor: Shepherd Construction

Completed: 1997

- 10,500 sq m floor space
- 12 floors plus plant deck
- glass clad atrium surrounded by feature lifts
- prime site in the heart of the city's traditional commercial district



 **amp consultants**

**OFFICES**



# Fenwick - Smith House, Pocklington School

AMP was engaged as structural consultants on this new build project. The main challenge was the support of masonry panels above the bow windows where reinforced concrete lintels were adapted with counter balance force provided by the large span precast concrete floor units.

- New Build
- Design of composite steel and concrete lintels to support large bay windows
- Structural steel beams to create the internal layout



 **amp consultants**

**EDUCATION**

   
consultancy engineering business environment

# King James 1st Community Art College, Bishop Auckland



**Structural Design** of new façade, canopy and curved screen. Façade supports were designed to add support to the flat roof, which is supported by steel beams. Curved steel supports for the cladded screen were seamlessly co-ordinated into the canopy, providing protection over the entrance area.

- Refurbishment to create visual impact at entrance to arts college
- Structural design and detailing of steel work and foundations



# CONTACT DETAILS:

## **AMP Consultants** – Civil & Structural Engineers

Morton House  
Morton Road  
Darlington, DL1 4PT  
United Kingdom

**T** +44(0) 1325 481941

**F** +44(0) 1325 366930

**E** [david@ampconsultants.com](mailto:david@ampconsultants.com)  
[www.ampconsultants.com](http://www.ampconsultants.com)



[www.ampconsultants.com](http://www.ampconsultants.com)